

Magical Mathematics

18.11.24
LO: Order days of the week

Sheet 2

Write the days in order along the top of the sheet. Draw and write two things you do on each day.

Monday Tuesday Wednesday Thursday Friday Saturday Sunday

Friday Lunch

Thursday BUSKET BALL

Saturday FOOT BALL

Wednesday BUSKET BALL

Sunday Working

Tuesday PE

Monday School Club

Challenge
Write the answer to these puzzles:
1. What is the day before, the day before Sunday?
2. What is the day before, the day after Monday?

Time 20.11.24

Write the times in the boxes.

Jayden

3 o'clock

5 o'clock

8 o'clock

11 o'clock

Draw the hands on the clock faces.

4 o'clock

10 o'clock

1 o'clock

6 o'clock

Match the times to the clocks.

12 o'clock

7 o'clock

2 o'clock

9 o'clock

This week in Maths, Reception and Year One have been learning about time. They have been learning days of the week, months, which months are in each season and telling the time.

Magical

87)	$\begin{array}{r} 189 \\ + 535 \\ \hline 724 \end{array}$	✓
43)	$\begin{array}{r} 375 \\ + 255 \\ \hline 630 \end{array}$	✓
107)	$\begin{array}{r} 375 \\ + 259 \\ \hline 634 \end{array}$	✓
113)	$\begin{array}{r} 259 \\ + 545 \\ \hline 804 \end{array}$	✓
127)	$\begin{array}{r} 255 \\ + 329 \\ \hline 584 \end{array}$	✓
137)	$\begin{array}{r} 325 \\ + 255 \\ \hline \end{array}$?
147)	$\begin{array}{r} 119 \\ + 545 \\ \hline 664 \end{array}$	✓

In Maths, Years 2, 3 & 4 have been learning a range of addition skills, from adding 2-digit numbers using a number square, through to column addition of 3-digit numbers. Everyone is working very hard, but enjoying the challenge (as you see)!

Great work, Kit!
Hope we do more!
Oh we will! 😊

⑥	$1 \times 2 = 2$	✓
⑦	$10 \times 2 = 20$	✓
⑧	$11 \times 2 = 22$	✓
⑨	$12 \times 2 = 24$	✓
①	$66 + 11 = 77$	
②	$34 - 12 = 22$	✓
③	$23 + 21 = 35$	✓
④	$89 - 22 = 67$	✓
⑤	$38 - 21 = 17$	✓
⑥	$76 - 11 = 65$	✓
⑦	$62 + 22 = 84$	✓
⑧	$45 + 33 = 78$	✓
⑨	$51 + 12 = 63$	✓
⑩	$21 - 31 = 52$	✓
⑪	$10 + 32 = 42$	✓

16
10

21 + 23 = 80
84

① 17 + 20 = 29
② 34 - 20 = 25
③ 35 + 30 = 65

Magical Mathematics

20/11/24
L.O: To use short division, with remainders as fractions.

① $748 \div 6 = 124 \frac{4}{3} \rightarrow \frac{2}{3} \checkmark$	$6 \overline{) 748}$
② $586 \div 4 = 146 \frac{2}{4} \rightarrow \frac{1}{2} \checkmark$	$4 \overline{) 586}$
③ $586 \div 9 = 65 \frac{1}{9} \checkmark$	$9 \overline{) 586}$
④ $9249 \div 7 = 1321 \frac{2}{7} \checkmark$	$7 \overline{) 9249}$
⑤ $4756 \div 3 = 1585 \frac{1}{3} \checkmark$	$3 \overline{) 4756}$
⑥ $7041 \div 6 = 1173 \frac{3}{6} \rightarrow \frac{1}{2} \checkmark$	$6 \overline{) 7041}$
⑦ $4204 \div 8 = 525 \frac{4}{8} \rightarrow \frac{1}{2} \checkmark$	$8 \overline{) 4204}$
⑧ $5785 \div 7 = 826 \frac{3}{7} = 826 \frac{3}{7}$	$7 \overline{) 5785}$
⑨ $2865 \div 9 = 318 \frac{3}{9} = 318 \frac{1}{3}$	$9 \overline{) 2865}$
⑩ $6869 \div 7 = 981 \frac{2}{7} \checkmark$	$7 \overline{) 6869}$
⑪ $6183 \div 8 = 772 \frac{3}{8} \checkmark$	$8 \overline{) 6183}$

Class 3 learned the following in maths this week:

When we divide numbers, sometimes we have a little bit left over - that's called a remainder! For example, if we share 17 candies among 4 friends, each friend gets 4 candies ($4 \times 4 = 16$), with 1 candy left over. Instead of just saying "remainder 1," we can write this as a mixed number!

Here's how:

* First, do the division:
 $17 \div 4 = 4$ remainder 1

* Then, turn that remainder into a fraction:

- The remainder (1) goes on top

- The number we divided by (4) goes on the bottom

* So $17 \div 4 = 4 \frac{1}{4}$

This tells us each friend gets 4 and one-quarter ($4 \frac{1}{4}$) candies - a much more precise way to express our answer!

19/11/24
To use short division with remainders as fractions or decimals.

① $9337 \div 4 = 2304 \frac{1}{4}$	$4 \overline{) 9337}$
② $5754 \div 4 = 1436 \frac{2}{4}$	$4 \overline{) 5754}$
③ $6235 \div 4 = 1558 \frac{3}{4}$	$4 \overline{) 6235}$
④ $8356 \div 5 = 1671 \frac{1}{5}$	$5 \overline{) 8356}$
⑤ $7782 \div 5 = 1556 \frac{2}{5}$	$5 \overline{) 7782}$
⑥ $3484 \div 5 = 696 \frac{4}{5}$	$5 \overline{) 3484}$
⑦ $4577 \div 8 = 572 \frac{3}{8}$	$8 \overline{) 4577}$
⑧ $9651 \div 8 = 1206 \frac{3}{8}$	$8 \overline{) 9651}$
⑨ $9734 \div 8 = 1216 \frac{6}{8}$	$8 \overline{) 9734}$
⑩ $9237 \div 4 = 2309 \frac{3}{4}$	$4 \overline{) 9237}$
⑪ $1436 \div 4 = 359$	$4 \overline{) 1436}$
⑫ $6235 \div 4 = 1558 \frac{3}{4}$	$4 \overline{) 6235}$
⑬ $8671 \div 5 = 173 \frac{1}{5}$	$5 \overline{) 8671}$
⑭ $1556 \div 5 = 311 \frac{1}{5}$	$5 \overline{) 1556}$
⑮ $696 \div 5 = 139 \frac{1}{5}$	$5 \overline{) 696}$



Ashdon Primary School

Newsletter

22nd November 2024

Address: Bartlow Road, Ashdon, Essex, CB10 2HB Tel: 01799584219 Email: admin@ashdon.essex.sch.uk



Bikeability at Ashdon



On the 11th and 12th of November, 12 eager cyclists from Years 4, 5 and 6 successfully completed their Bikeability training, supported by Essex County Council's Bikeability instructors. The students demonstrated remarkable skill and determination as they progressed through their Level 1 and Level 2 cycling proficiency courses.

The training provided these young learners with crucial road safety skills and cycling techniques, empowering them to navigate streets confidently and responsibly.

Teachers expressed immense pride in the children's achievements, highlighting their commitment to learning and mastering essential cycling abilities.

Bikeability training is more than just learning to ride a bike – it's about building confidence, understanding road safety and developing independence. These 12 students have taken significant steps towards becoming safe and competent cyclists.

Stansted Airport Fund Boosts Sports Equipment at Ashdon Primary School



Ashdon Primary School has received a generous £300 donation from The Stansted Airport Passenger Community Fund, enabling the purchase of new sports equipment for its pupils. The donation, secured through the dedicated efforts of the school's Parent Teacher Association (PTA), has been used to acquire new footballs and tennis balls that will enhance the school's physical education program.

The new equipment will significantly improve the quality of PE lessons at Ashdon Primary School, allowing students to develop their sporting skills with proper equipment. Having an adequate supply of quality balls ensures that more children can participate actively in sports activities simultaneously, maximizing engagement and learning opportunities during PE sessions.

"Our children are incredibly grateful for this thoughtful donation," said a school representative. "The new equipment will enable our students to fully participate in various sports activities, helping them develop their coordination, teamwork, and physical fitness skills."

The school extends its heartfelt thanks to both the Stansted Airport Passenger Community Fund for their generous contribution and to the PTA for their initiative in applying for the funding. This successful grant application demonstrates the vital role that PTAs play in supporting and enhancing educational facilities for their school communities.

The new sports equipment will benefit current and future Ashdon pupils, contributing to their physical development and enjoyment of sports activities for years to come.



Ashdon Primary School

Newsletter

22nd November 2024

Address: Bartlow Road, Ashdon, Essex, CB10 2HB Tel: 01799584219 Email: admin@ashdon.essex.sch.uk

Ashdon Primary School PTA's Upcoming Events



For more info contact us at
ashdonprimarypta@gmail.com



Ashdon Primary School

Address: Bartlow Road, Ashdon, Essex, CB10 2HB Tel: 01799584219 Email: admin@ashdon.essex.sch.uk

please join us for our

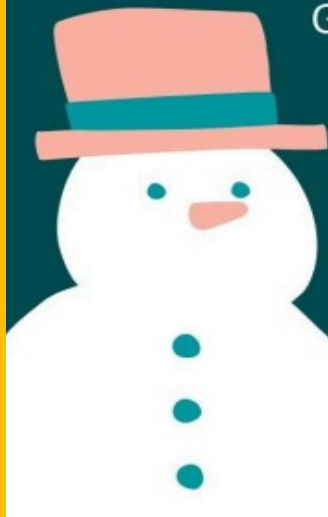
CHRISTMAS FAIR

In the School Hall

FRIDAY, 6
DECEMBER 2024

15:30-18:00

Games, raffle, festive food &
drink, face painting and
Santa's Grotto!



Stars of the Week!



Wow!! Look at our amazing stars of the week!! They have impressed so many staff by working hard and tackling challenges all week long. We are so incredibly proud of you all. Well done!



THANK YOU

Ashdon Primary School

for raising a fantastic

£200.60

The money you have raised will be used to help change the lives of children and young people facing disadvantage in communities across the UK.

**BBC
CHILDREN
IN NEED**

BBC Children in Need has not verified the above fundraising. This is not a receipt.
© BBC 2022 Reg. charity England & Wales no. 802052 and Scotland no. SC039557.

Attendance Winners!

First Place: Class 2 = 100%

Second Place: Class 1 = 97.1%

Second Place: Class 3 = 97.1%

Well done Class 2.
You are our weekly winners.
You have earned yourselves an extra 10 minutes playtime on Friday afternoon!

Reader of the Week

Children at Ashdon have two additional opportunities to read to staff. This is in addition to their guided reading sessions, as well as other reading opportunities in class. Ms. Winning and Mrs. Davies run these clubs on Tuesdays and Thursdays! They had so many children that wanted to have additional reading sessions.

Here is the reader of the week:



Well done Reader of the Week! I award you a House Point for working hard on improving your reading!

Important News and Information:

NB: Labelling Clothing: Please double check that your child's clothing is clearly labelled as this helps us to retrieve some lost items.

- Thursday 28th November @ 14:30-15:15 - Stay and Play
- Friday 29th November - Non-uniform day in return for chocolate for the fair

- Thursday 5th December @ 14:30-15:15 - Stay and Play
- Friday 6th December - Christmas Jumper Day - All Children and Staff to wear Christmas Jumpers or something red and green. No princess or superhero outfits please. :-)
- Friday 6th December @ 15:30-18:00 - Christmas Fair

- Wednesday 11th December @ 11:00-12:30 - Santa Dash
- Friday 13th December @ 10:00 - Christmas Nativity Play (all families and friends welcome)
- Friday 13th December @ 14:00 - Christmas Nativity Play (all families and friends welcome)

- Tuesday 17th December @ 10:00-11:00 - Christmas Church Carol Service
- Tuesday 17th December pm - Panto in school
- Wednesday 18th December - School Christmas Lunch
- Wednesday 18th December time TBC - Christmas Film Night
- Friday 20th December - Last Day of Term